

SEA

The image features the word "SEA" in a large, bold, white sans-serif font. The letters are set against a solid blue background. The letter 'A' is uniquely designed, containing a stylized sailboat with a single dark blue sail. The entire graphic is reflected on a horizontal line, creating a mirror image of the word and the sailboat below it. The reflection is rendered in a lighter shade of blue, giving the impression of water or a polished surface.

Install any wet facility
anywhere you want!

Doable???

How do you
evacuate a WC
installed in a
basement?

A Saniflo Macerator!



How do you
evacuate a bathroom
located far from the
drain or if the drain is
blocked?

A SaniPro XR!



How do you evacuate
waste water from
several WC +
Washbasins + Urinals
without evacuation
drain near by?

A Sanicubic lifting station!



WASTE WATER EVACUATION PROBLEM

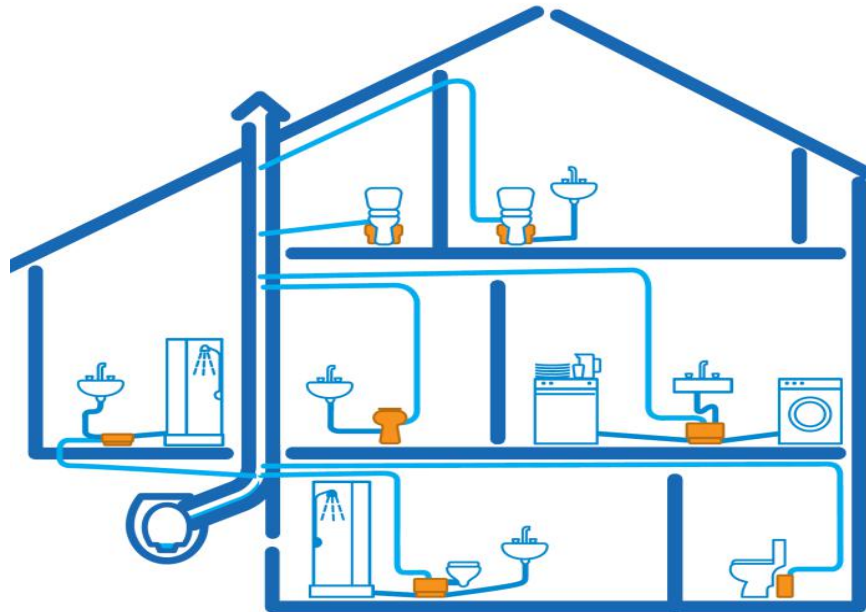
- When it is impossible to use conventional gravity drainage
(e.g basement, distance between site and sewage)
- When plumbing / building work is too disruptive
- When main drains are regularly blocked or clogged
- For temporary facilities (construction sites, etc.)
- Mobile toilets

Macerators for WC and Evacuation pumps





- Fecal matter and toilet paper **Dilaceration**
- **Evacuation** through small diameter pipes, that can be located at several tens of meters from toilets throughout the house, even in the basement



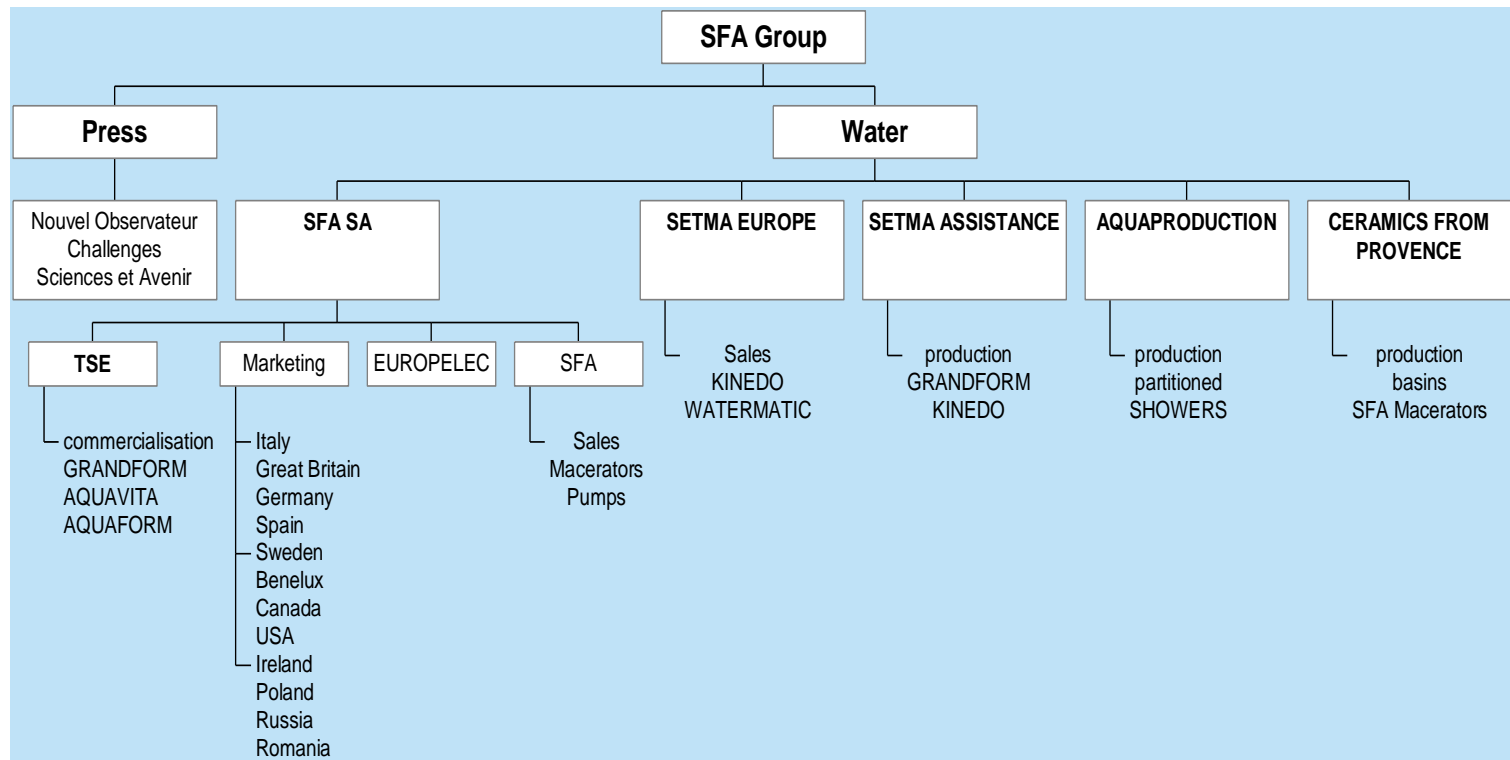
- No structural work – ***NO SUMP DIGGING!***
- No matter where into a house
- Cost saving solution
- Evacuation pipe of 22, 28, ou 32 mm diameter to reach the main evacuation pipe (Ø 100 mm)



- ...from basement to the roof!
 - Domestic environment (private villas, flats...)
 - Professional environment (office buildings, stores, medical premises...)
 - Commercial environment (restaurants, bars, beauty therapist...)
 - Industrial environment (mining camps, construction sites, warehouses...)

- SFA or Saniflo (brand name in english spoken countries) is part of French 
- Concept invented and commercialized **since 1958** (55years!)
- World leaders of Macerating Units and Gray Water Pumps for domestic and commercial use .

Core Business: press & water



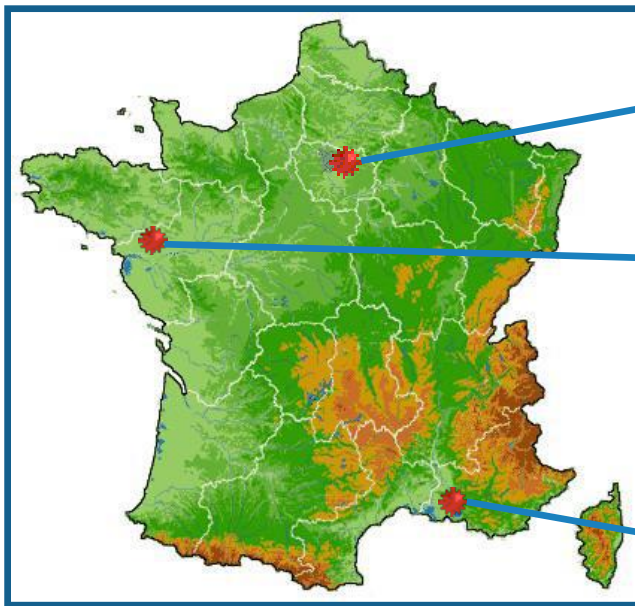
SFA Group SFA GROUP – PRODUCTION SITES

PRODUCED IN France SINCE 1958!

More than 7 million units installed worldwide!

Almost 15 years experience in India!

95% of international market share



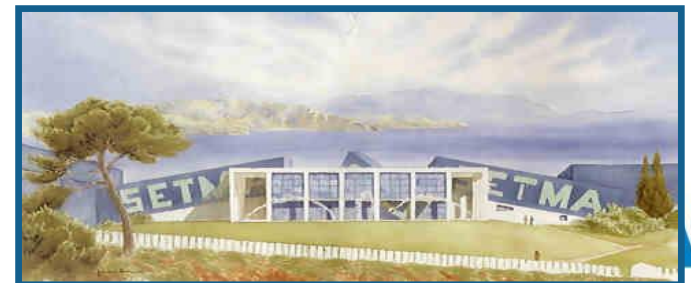
BREGY



CHEMERE



LA CIOTAT



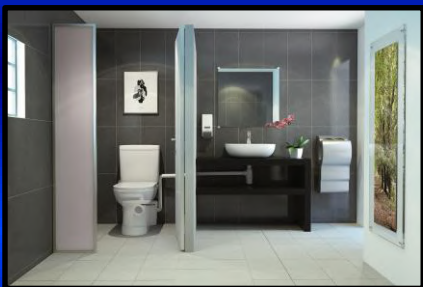
World leaders of Macerating Units and Gray Water Pumps
for domestic and commercial use.



Distributed in 120 countries – 24 Subsidiaries

- A unique Solution to daily problems
- It will give design flexibility
- It will generate extra profits!
- It will enhance / reinforce my professional image
as a specialist

DOMESTIC USAGE



PROFESSIONAL USAGE



SANICONDENS RANGE



**DOMESTIC RANGE**

↑ 5 m → 100 m

Ø : 22/28/32 mm

Motor power rating : 400 W

**COMMERCIAL RANGE**

UP TO ↑ 10 m → 100 m

Ø : Between 22mm and 100 mm

Motor power rating : UP TO 2x 2 000 W

T° : UP TO 90° c (for 5 min max)

Tank volume : UP TO 120L

IP68

BMS Connection



↑ 6 m → 60 m

Motor power rating : UP TO 22 W

Maximum flow rate : UP TO 15 L/h

It will be a matter of 3 parameters:

1. What do we need to Evacuate? (is it a single toilet? A toilet and a wash basin? A complete bathroom? A kitchen? A laundry? Etc.?)
2. What will be the usage? (is it a private home or a public/ Professional area?)
3. What will be the discharge requirements to reach the sewage or main drainage pipe? (Vertical and horizontal?)

II – Products standards



- Compliance with the requirement of CE and CSA products

The CE logo on a device is mandatory in Europe and is an authorization to launch a product.

- Our units are compliant with the following guidelines:

- **89-106-CEE** : Construction guideline
- **2006-95-CEE** : Low voltage guideline
- **2004-108-CEE** : Electromagnetic compatibility guideline

For these 3 guidelines, our certification tests are realized in accredited laboratories as LCIE, le VDE, le CSTB...



- Our macerators are compliant to the following hydraulic standards:

- for macerators: EN12050-3 ([cf. annexes](#))
- for pumps: EN12050-2 ([cf. annexes](#))



- These are not chemical toilets:



- **No** chemical are added
- Environmentally friendly working system



- Water saving :



- 3 liters flush instead of 5 liters
- 2 liters saved at each flush
- Button double flush 1,8 L / 3 L (on specific models)

**Gamme
SANICOMPACT**



For a family of 4 that is 14 600 liters saved per year

SFA Group Installation and Maintenance

- **INSTALLATION GUIDANCE PROVIDED BY SFA**
- **ONCE EVERY 6 MONTHS:**
 - Unplug your SFA units
 - Pour into your toilet 1 bottle of Descaler:
 - Especially made to respect macerators membranes
 - No risk for septic tank
 - Laboratory tested

Cleans

Disinfects

Purifies

- Leave it for the night – Replug your SFA unit the following morning

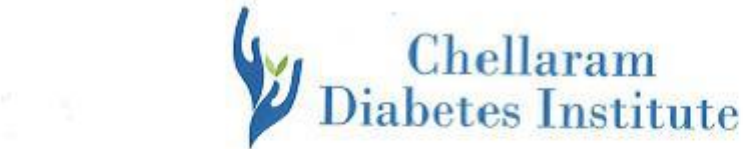


SFA

Chellaram Dia

Challenges:

- Various doc
- A laboratory
- The hospita
- Different are



This is to acknowledge that the Chellaram Diabetes Institute, Bavdhan, Pune, has 30 SFA Units (Sanicom & Sanicubic Pro) running at our hospital for last 3 years without any breakdowns or problems. The after sales service has been timely and reliable. This gave us confidence on reliability of the product and we have expanded our facilities to the ground floor hospital facilities and procured 10 more SFA units.

As a matter of fact SFA units were very useful & we could make toilets/ bathrooms at desired places inside our hospital. It gave us flexibility in design to set our different units as per our requirement.

Solution:

- 50 SFA
- at variou
- 4 years
- again to
- SFA tech

A handwritten signature in blue ink, appearing to read "Dr M K Mandal".

Dr M K Mandal
Chief Medical Director
Chellaram Diabetes Clinic
Unit of Chellaram Foundation
1st floor "Lalani Quantum", Pune Bangalore Highway
Bavdhan (budruk), Opp. DSK Toyota,
Pune 411021 (T) 020-66839747 M- +918605011281
www.cdi.org.in



lled
ology
eded

IDBI Bank- Mumbai:

Challenges:

- An office staff bathroom with 2 WC, 3 wash basins and 3 urinals
- How to evacuate waste water from the basement to the upper se



Solution:

- IDBI Bank opted for the NEW SaniCubic XL
- Its 120L tank and 40m³/h flow rate easily manage waste water evacuation
- The SaniCubic XL managed the vertical evacuation in a 80 mm pipe and up to the main sewage
- SaniCubic performances and quality allowed IDBI Bank to obtain on a long term solution

Dow Corning laboratory – Mumbai:

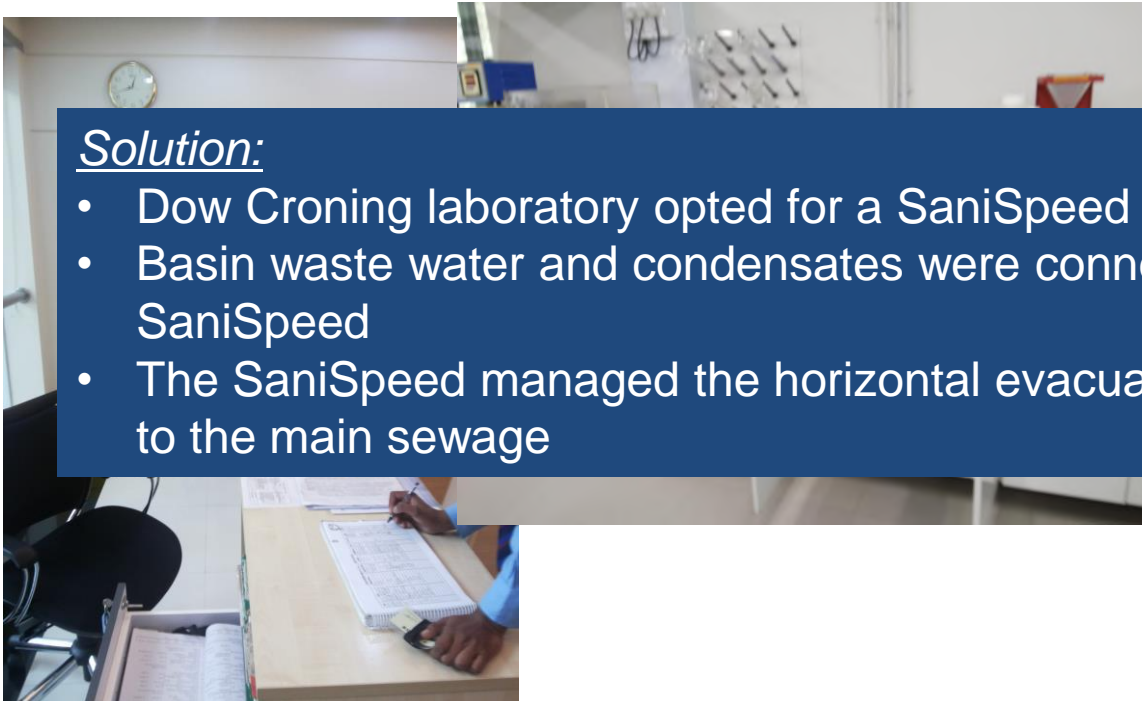
Challenges:

- The laboratory has no main sewage nearby!
- The laboratory needs to be equipped with 1 basin and condensates needed to be evacuated!
- How to reach the closest main sewage without the possibility of using



Solution:

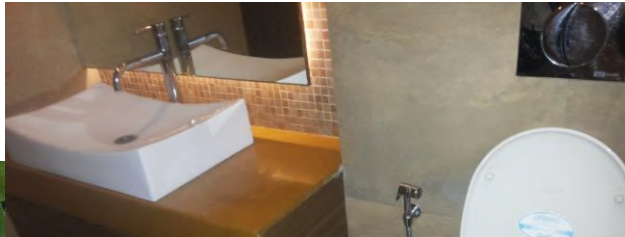
- Dow Corning laboratory opted for a SaniSpeed
- Basin waste water and condensates were connected to the SaniSpeed
- The SaniSpeed managed the horizontal evacuation in a 32 mm pipe to the main sewage



Iosis SPA - Mumbai:

Challenges:

- A Beauty salon located in a basement!
- How to evacuate waste water from 1 WC + 1 washbasin + basins from the salon?



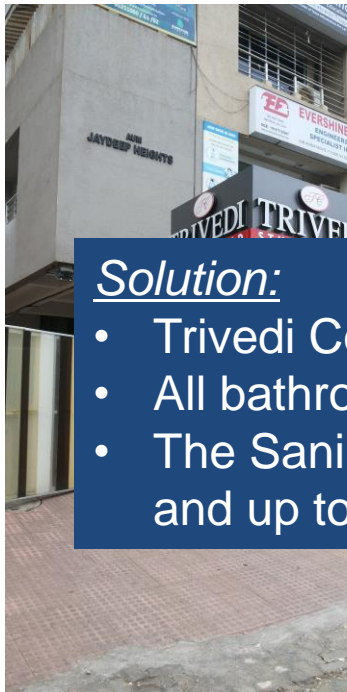
Solution:

- Iosis Spa opted for a The SaniCubic managed the vertical evacuation in a 50 mm pipe and up to the main sewage
- All waste water were connected to the SaniCubic
- The SaniCubic managed the vertical evacuation in a 50 mm pipe and up to the main sewage

Trivedi Study Abroad- Mumbai:

Challenges:

- An office/ student staff bathroom (1 toilet, 1 washbasin) was
- How to evacuate waste water has bathroom was lower than



Solution:

- Trivedi Consultants opted for a SaniBest Pro
- All bathroom wastes were connected to the SaniBest Pro
- The SaniBest Pro managed the vertical evacuation in a 32 mm pipe and up to the main sewage

Dental Clinic - Mumbai:

Challenges:

- The dental clinic is situated in a mall basement!
- How to evacuate waste water from dental chairs and washbasins?



Solution:

- Dental Clinic opted for a SaniSpeed
- All dental chairs and washbasins wastes were connected to the SaniSpeed
- The SaniSpeed managed the vertical evacuation in a 32 mm pipe and up to the main sewage

With SFA macerators
and pumps, install
any wet facility
anywhere you want!

- **Any doubts ?**
- **More information ?**
- **Past experiences ?**
- **Coming jobs ?**





THANK YOU!